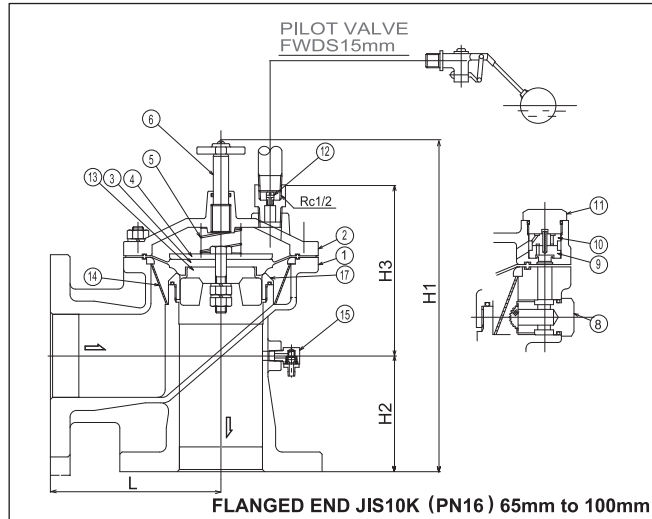
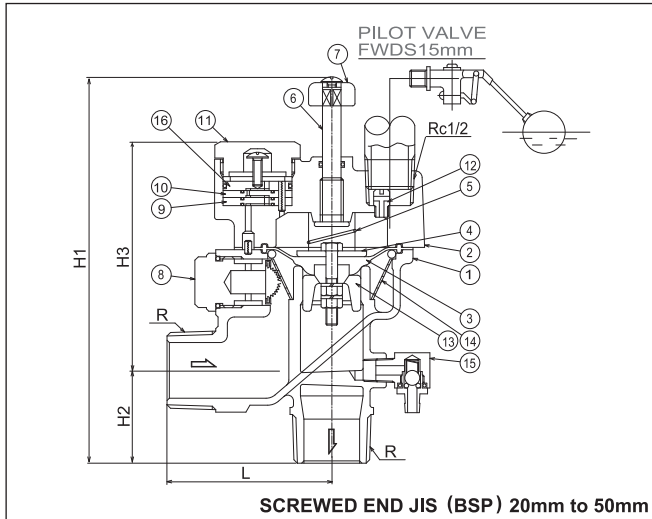


Constant Head Pilot Operated Float Valve : Model DL



●Dimensions: Screwed end unit:mm

Connection Standard : JIS B 0203 & BS21					
NOMINAL	20	25	32	40	50
L	68	71	88	95	101
H1	157	166	173	184	196
H2	34	40	50	53	55
H3	93.5	98.5	104	103	109
END	3/4"	1"	1 1/4"	1 1/2"	2"

●Dimensions: Flanged end unit:mm

Connection Standard : JIS B 2240			
NOMINAL	65	80	100
L	130	156	188
H1	261	301	345
H2	81	106	135
H3	135	152	169
FLANGE	JIS10K		

Connection Standard : ISO 7005-3 (BS4504)			
NOMINAL	65	80	100
L	132	158	190
H1	263	303	347
H2	83	108	137
H3	135	152	169
FLANGE	PN16		

●Materials:

No.	Description	Material	No.	Description	Material
1	Body	Bronze	10	Resister B*	Brass / Plastic
2	Cover	Bronze	11	Cap	Brass
3	Diaphragm	EPDM	12	Orifice	Brass
4	Diaphragm plate	Stainless Steel	13	Guide	Bronze
5	Spring	Stainless Steel	14	Strainer	Stainless Steel
6	Adjustable spindle	Brass	15	Vacuum holder	Brass
7	Handle	Brass / Bronze	16	Resister C	Brass
8	Strainer holder	Brass	17	Seat	Stainless Steel
9	Resister A	Brass / Plastic			

NOTICE* Size 20,25mm:Resister E, Size 32,40,50mm: Resister B

ISO9001 Certified

Japanese Industrial Standard Permitted Factory
Japan Water Works Association Authorized Factory

KKK KANE KOGYO Co., Ltd.

Head office and factory : 2036 Okusa, Komaki-shi, Aichi-ken 485-0802 Japan

TEL : 81-568-79-2476 FAX : 81-568-79-6422

Web site: <http://www.kkk-kane.co.jp> E-mail: overseasales@kkk-kane.co.jp

Edition 8-1/2003