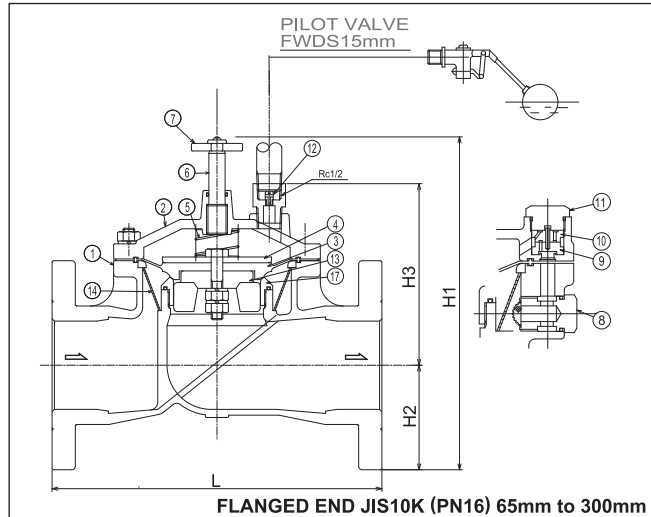
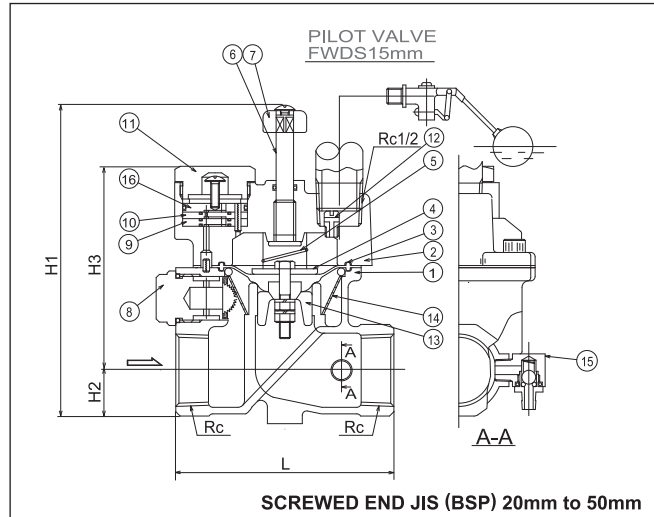


KKK BRONZE VALVES

Constant Head Pilot Operated Float Valve : Model DS



●Dimensions: Screwed end unit : mm

Connection Standard : JIS B 0203 & BS 21					
NOMINAL	20	25	32	40	50
L	90	100	110	120	140
H1	136	142	154	159	173
H2	19	21	26	30	37
H3	90	94	99	98	104
END	3/4"	1"	1 1/4"	1 1/2"	2"

●Dimensions: Flanged end unit : mm

Connection Standard : JIS B 2240							
NOMINAL	65	80	100	150	200	250	300
L	250	280	340	460	510	572	642
H1	267.5	287.5	315	412	437	473	563
H2	87.5	92.5	105	140	165	200	222.5
H3	140	155	184	228	228	228	265
FLANGE	JIS10K						

unit : mm							
Connection Standard : ISO 7005-3 (BS4504)							
NOMINAL	65	80	100	150	200	250	300
L	254	284	344	460	518	580	650
H1	272.5	295	320	414.5	442	475.5	570.5
H2	92.5	100	110	142.5	170	202.5	230
H3	140	155	184	228	228	228	265
FLANGE	PN16						

●Materials:

No.	Description	Material	No.	Description	Material
1	Body	Bronze	10	Resister B*	Brass / Plastic
2	Cover	Bronze	11	Cap	Brass
3	Diaphragm	EPDM	12	Orifice	Brass
4	Diaphragm plate	Stainless Steel	13	Guide	Bronze
5	Spring	Stainless Steel	14	Strainer	Stainless Steel
6	Adjustable spindle	Brass	15	Vacuum holder	Brass
7	Handle	Brass / Bronze	16	Resister C	Brass
8	Strainer holder	Brass	17	Seat	Stainless Steel
9	Resister A	Brass / Plastic			

NOTICE* Size 20,25mm:Resister E,Size 32,40,50mm: Resister B

ISO9001 Certified

Japanese Industrial Standard Permitted Factory
Japan Water Works Association Authorized Factory

KKK KANE KOGYO Co., Ltd.

Head office and factory : 2036 Okusa, Komaki-shi, Aichi-ken 485-0802 Japan
TEL : 81-568-79-2476 FAX : 81-568-79-6422

Web site: <http://www.kkk-kane.co.jp> E-mail: overseasales@kkk-kane.co.jp

Edition 8-1/2003